

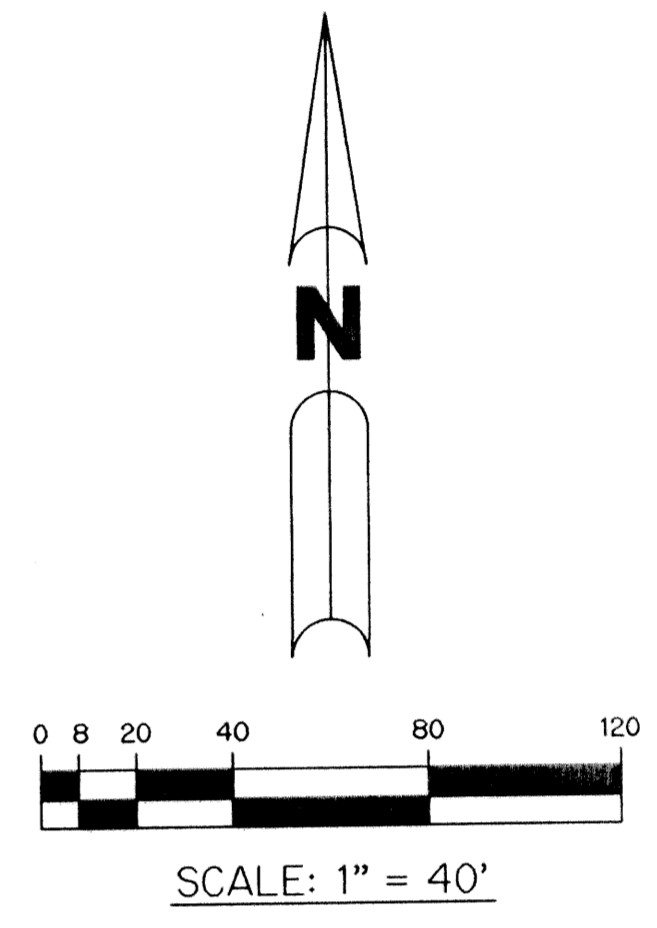
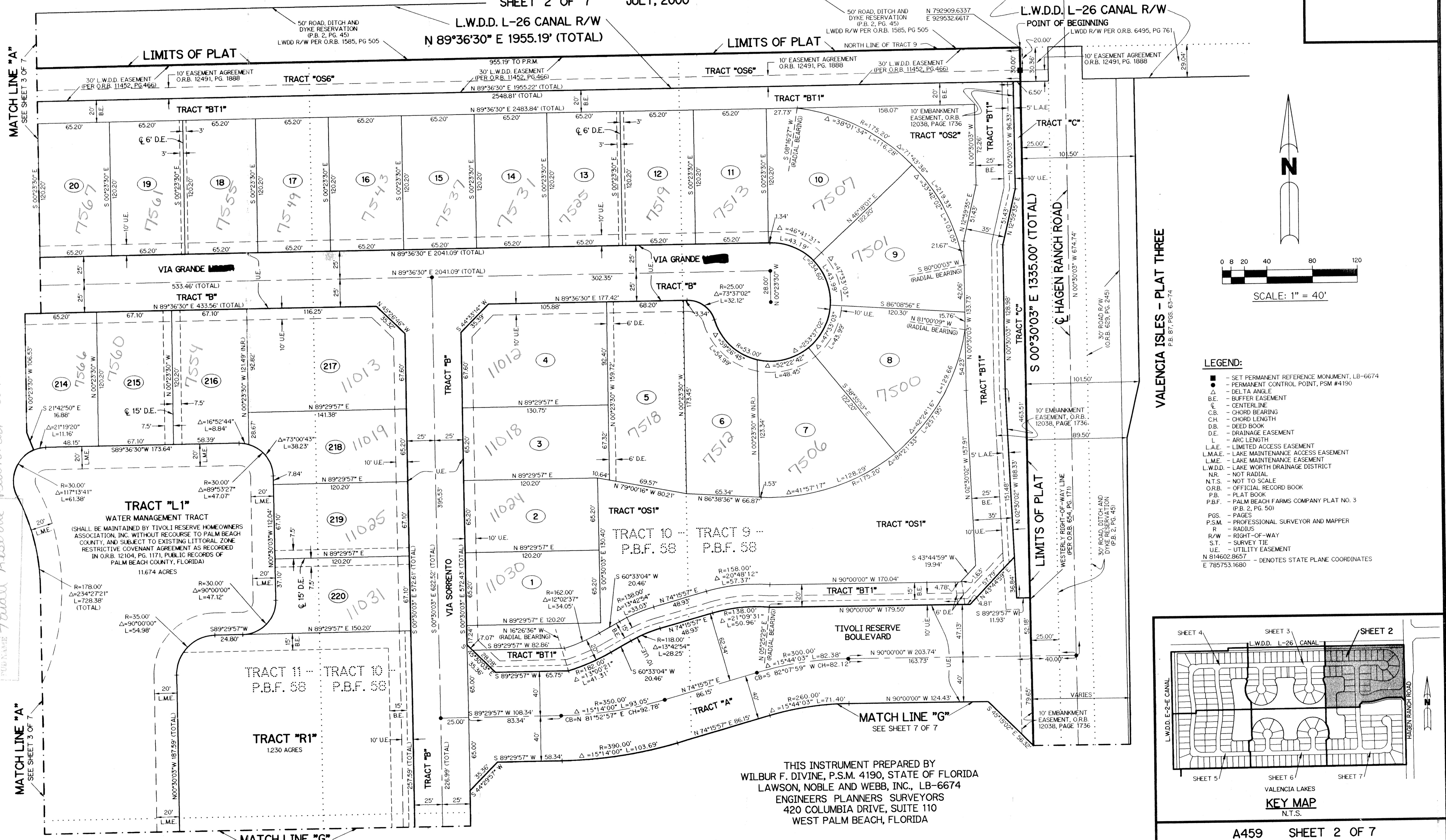
# TIVOLI RESERVE

BEING A REPLAT OF ALL OF TRACTS 10 THROUGH 14, 18 THROUGH 23 AND A PORTION OF TRACTS 9, 15, 16, 17 & 24, BLOCK 58, TOGETHER WITH A PORTION OF THE NORTH ONE-HALF OF THE 30 FOOT RIGHT-OF-WAY ADJOINING THE SOUTH LINE OF SAID TRACTS 17 THROUGH 24, BLOCK 58, PALM BEACH FARMS COMPANY PLAT NO. 3, AS RECORDED IN PLAT BOOK 2, PAGES 45 THROUGH 54, OF THE PUBLIC RECORDS OF PALM BEACH COUNTY FLORIDA AND LYING IN SECTIONS 32 AND 33, TOWNSHIP 45 SOUTH, RANGE 42 EAST, PALM BEACH COUNTY, FLORIDA.

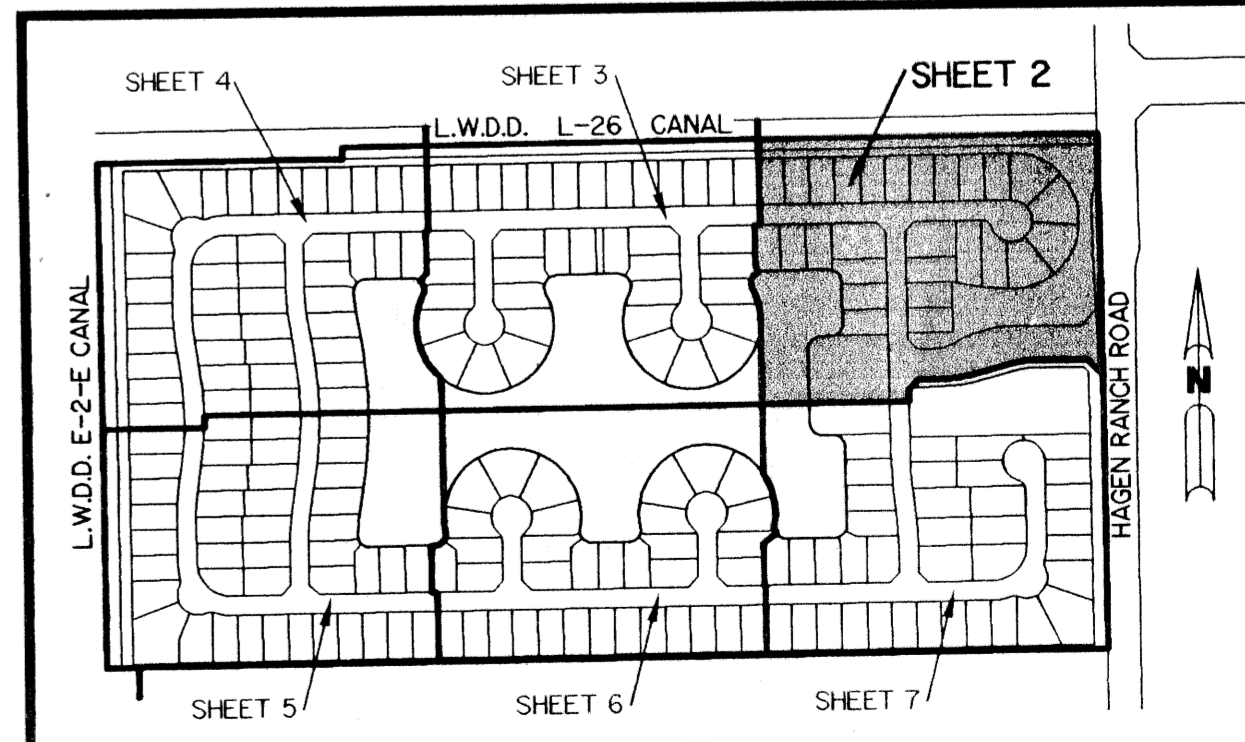
SHEET 2 OF 7 JULY, 2000

**NOTE:**  
COORDINATES SHOWN ARE GRID COORDINATES  
DATUM = NAD 83 (1998 ADJUSTMENT)  
ZONE = FLORIDA EAST ZONE  
LINEAR UNIT = U.S. SURVEY FEET  
COORDINATE SYSTEM 1983 STATE PLANE  
TRANSVERSE MERCATOR PROJECTION  
ALL DISTANCES ARE GROUND  
SCALE FACTOR = 1.0000269  
NO ROTATION: PLAT BEARING = GRID BEARING

WOOLBRIGHT ROAD  
120' R/W (O.R.B. PG. 50)



- LEGEND:**
- - SET PERMANENT REFERENCE MONUMENT, LB-6674
  - - PERMANENT CONTROL POINT, PSM #4190
  - Δ - DELTA ANGLE
  - B.E. - BUFFER EASEMENT
  - C.E. - CENTERLINE
  - C.B. - CHORD BEARING
  - C.H. - CHORD LENGTH
  - D.B. - DEED BOOK
  - D.E. - DRAINAGE EASEMENT
  - L. - ARC LENGTH
  - L.A.E. - LIMITED ACCESS EASEMENT
  - L.M.A.E. - LAKE MAINTENANCE ACCESS EASEMENT
  - L.M.E. - LAKE MAINTENANCE EASEMENT
  - L.W.D.D. - LAKE WORTH DRAINAGE DISTRICT
  - N.R. - NOT RADIAL
  - N.T.S. - NOT TO SCALE
  - O.R.B. - OFFICIAL RECORD BOOK
  - P.B. - PLAT BOOK
  - P.B.F. - PALM BEACH FARMS COMPANY PLAT NO. 3 (P.B. 2, PG. 50)
  - P.S.M. - PROFESSIONAL SURVEYOR AND MAPPER
  - R. - RADIUS
  - R/W - RIGHT-OF-WAY
  - S.T. - SURVEY TIE
  - U.E. - UTILITY EASEMENT
  - N 814602.8657  
E 785753.1680 - DENOTES STATE PLANE COORDINATES



THIS INSTRUMENT PREPARED BY  
WILBUR F. DIVINE, P.S.M. 4190, STATE OF FLORIDA  
LAWSON, NOBLE AND WEBB, INC., LB-6674  
ENGINEERS PLANNERS SURVEYORS  
420 COLUMBIA DRIVE, SUITE 110  
WEST PALM BEACH, FLORIDA